

Figure 7: Average Industrial Bond Yields

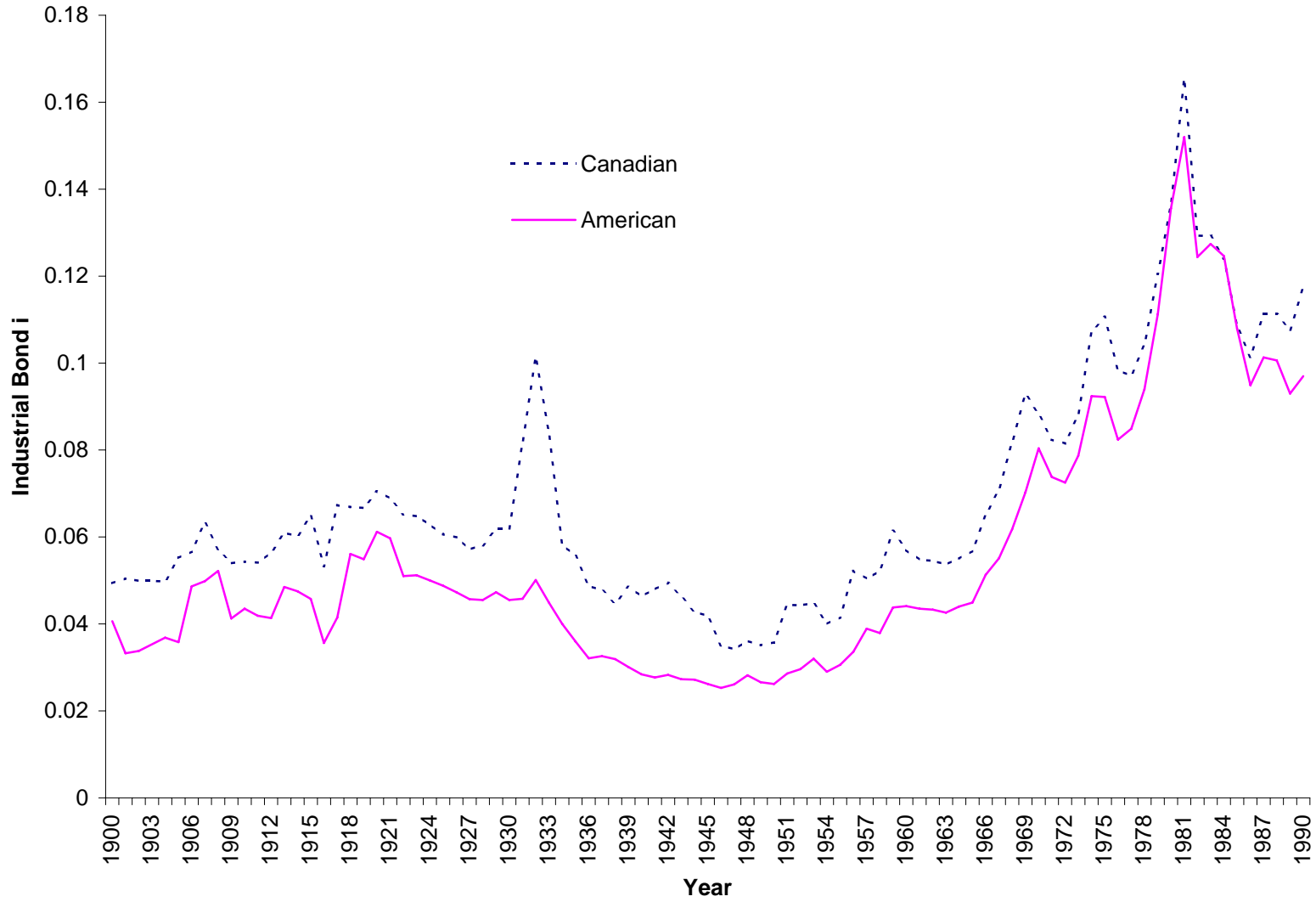


Figure 6a: Mean Ex Post Returns to Capital

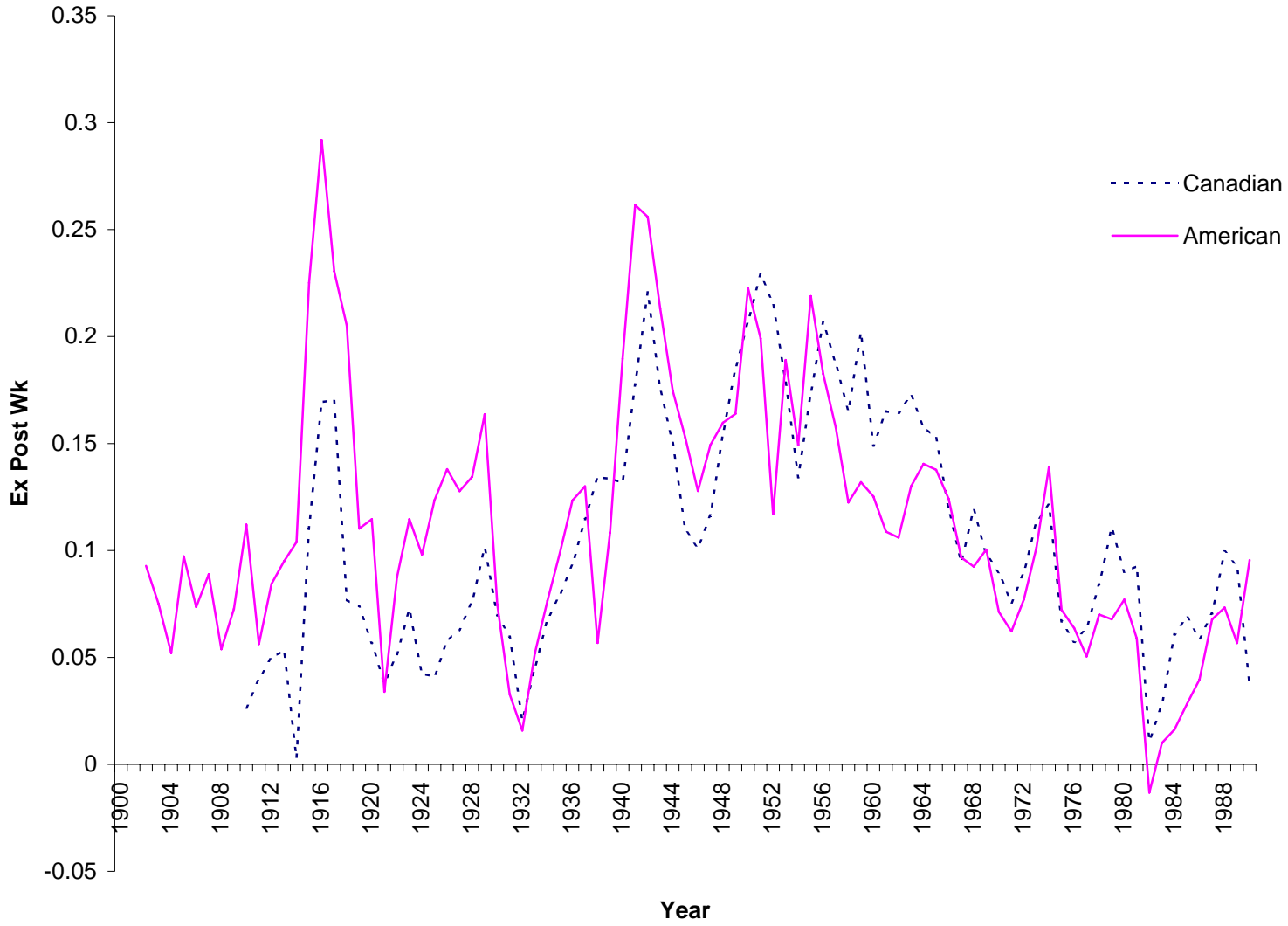


Figure 5a: Mean Financial Capital Stock / Assets

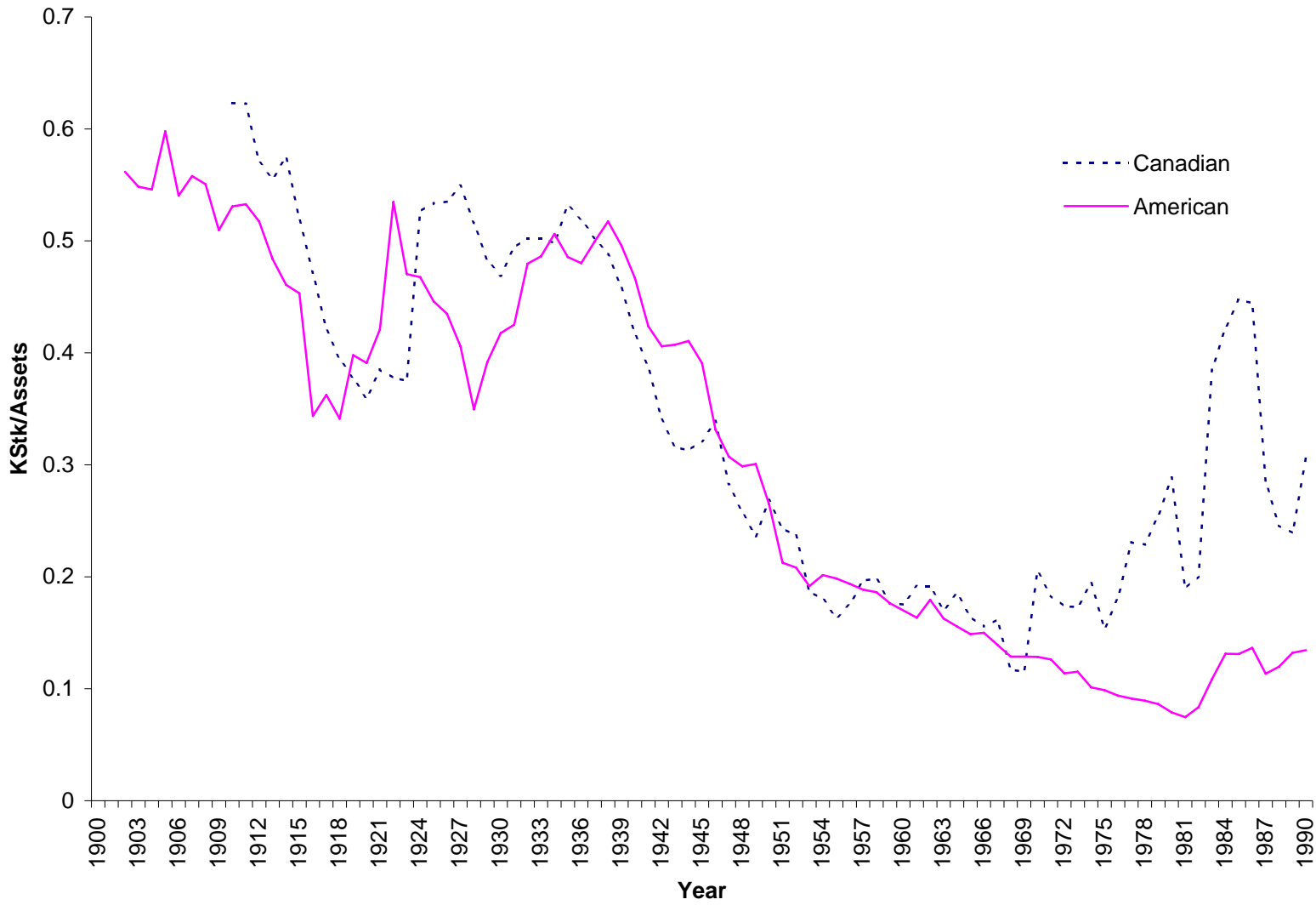


Figure 4a: Mean Retained Earnings / Assets

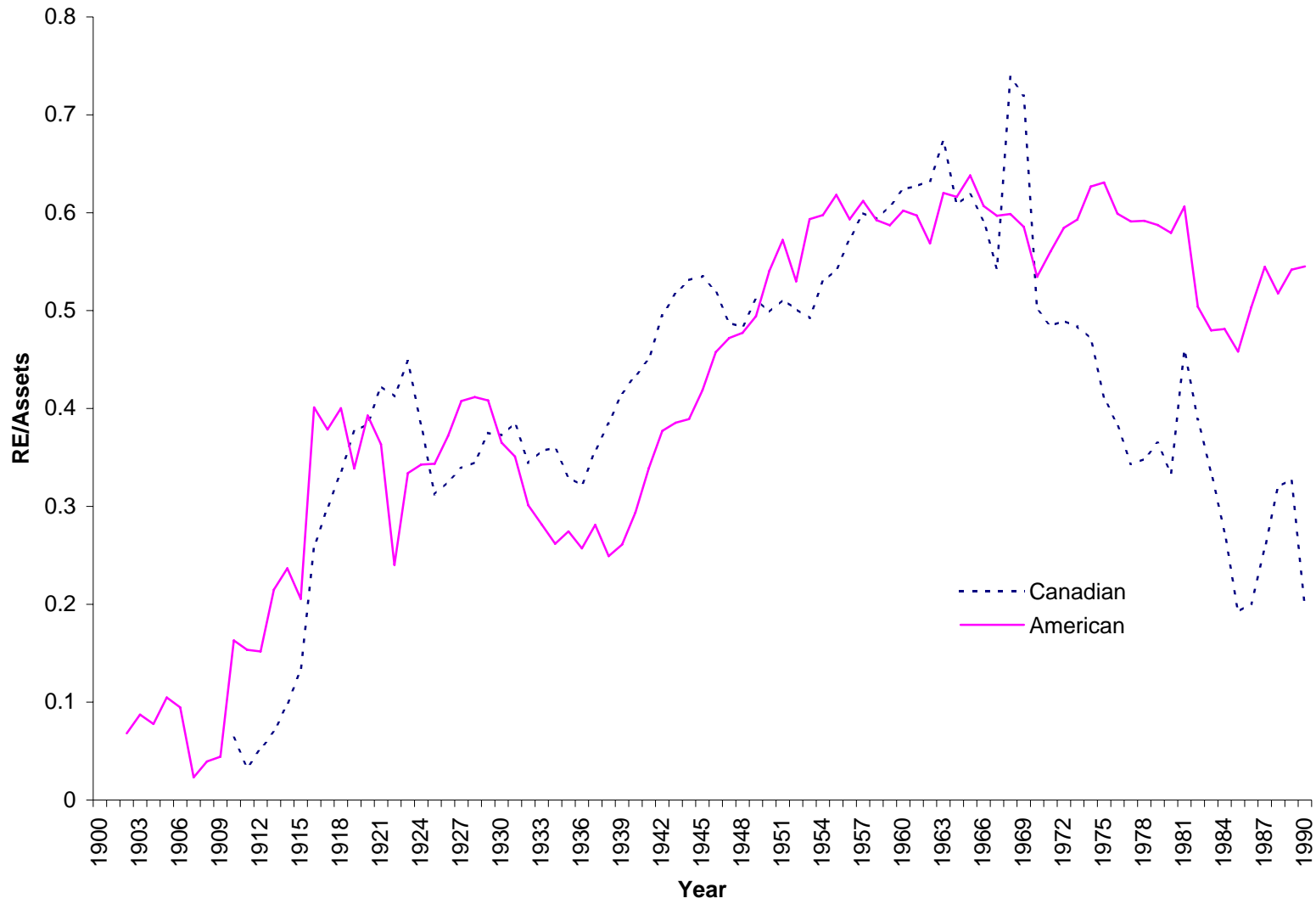


Figure 3a: Mean Long Term Debt / Assets

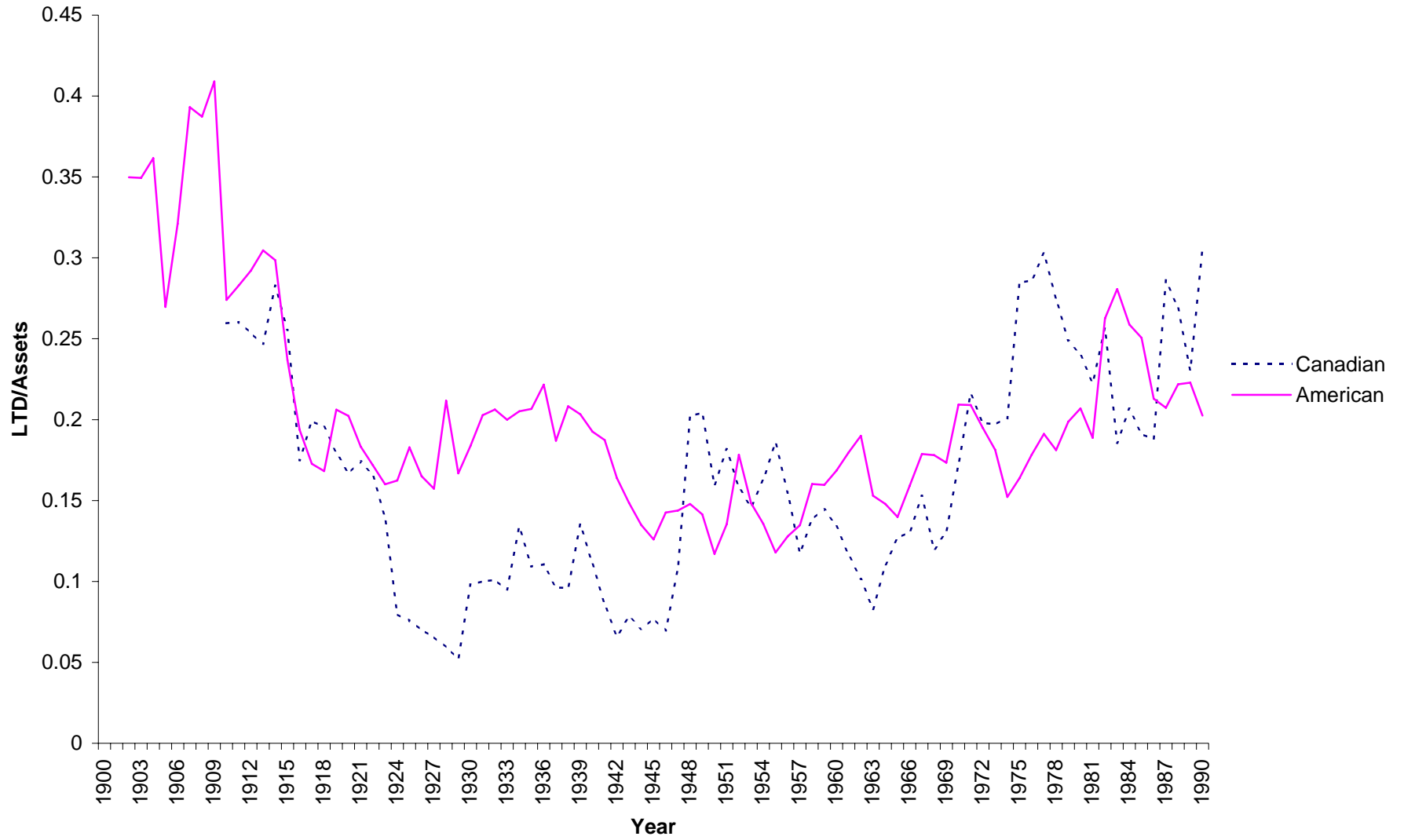


Figure 2a: Mean Short Term Debt / Assets

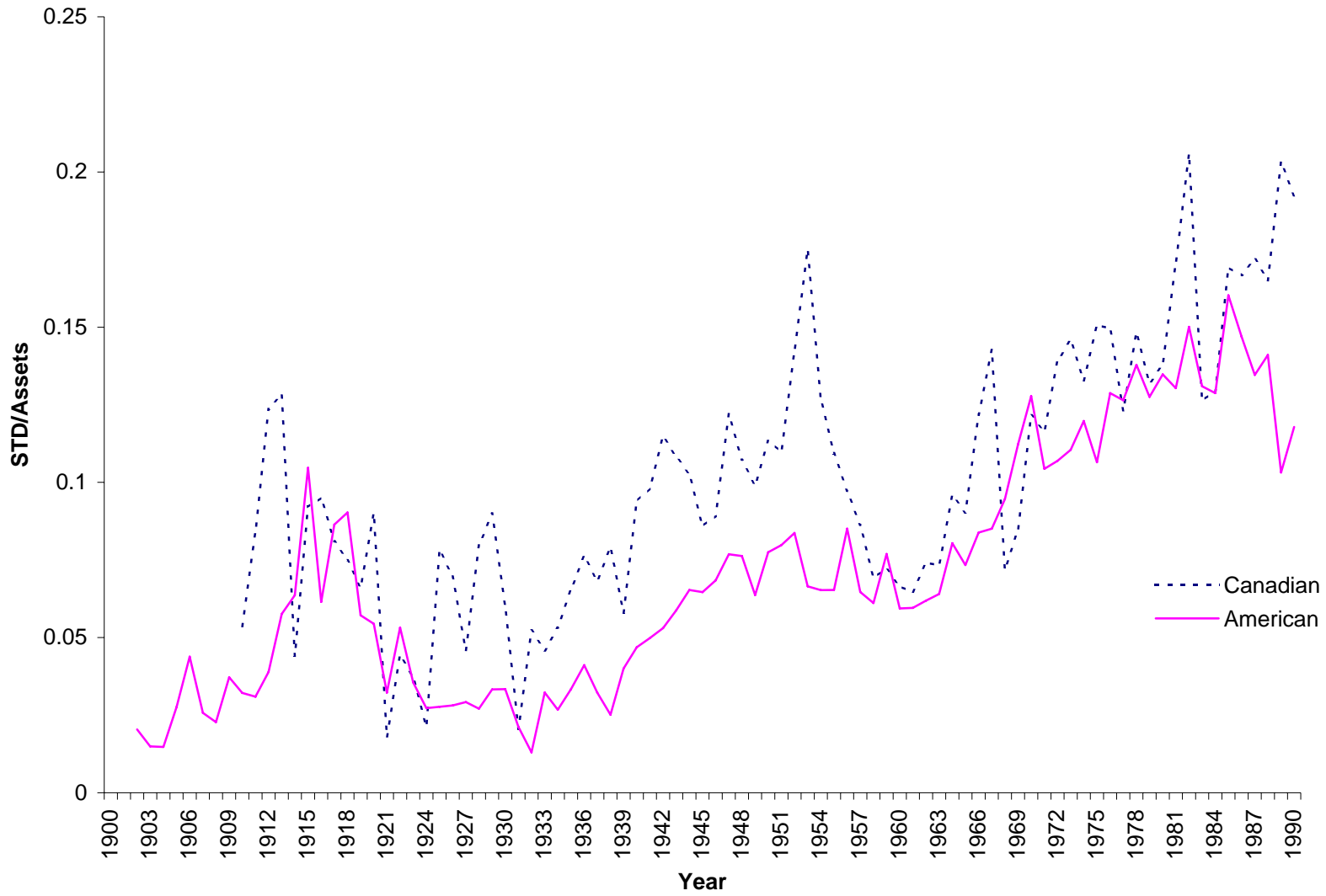


Figure 1a: Mean Debt / Equity

