

Figure 1. Median bias of three estimators, $r = 5$, $R_\infty^2 = 0.1$

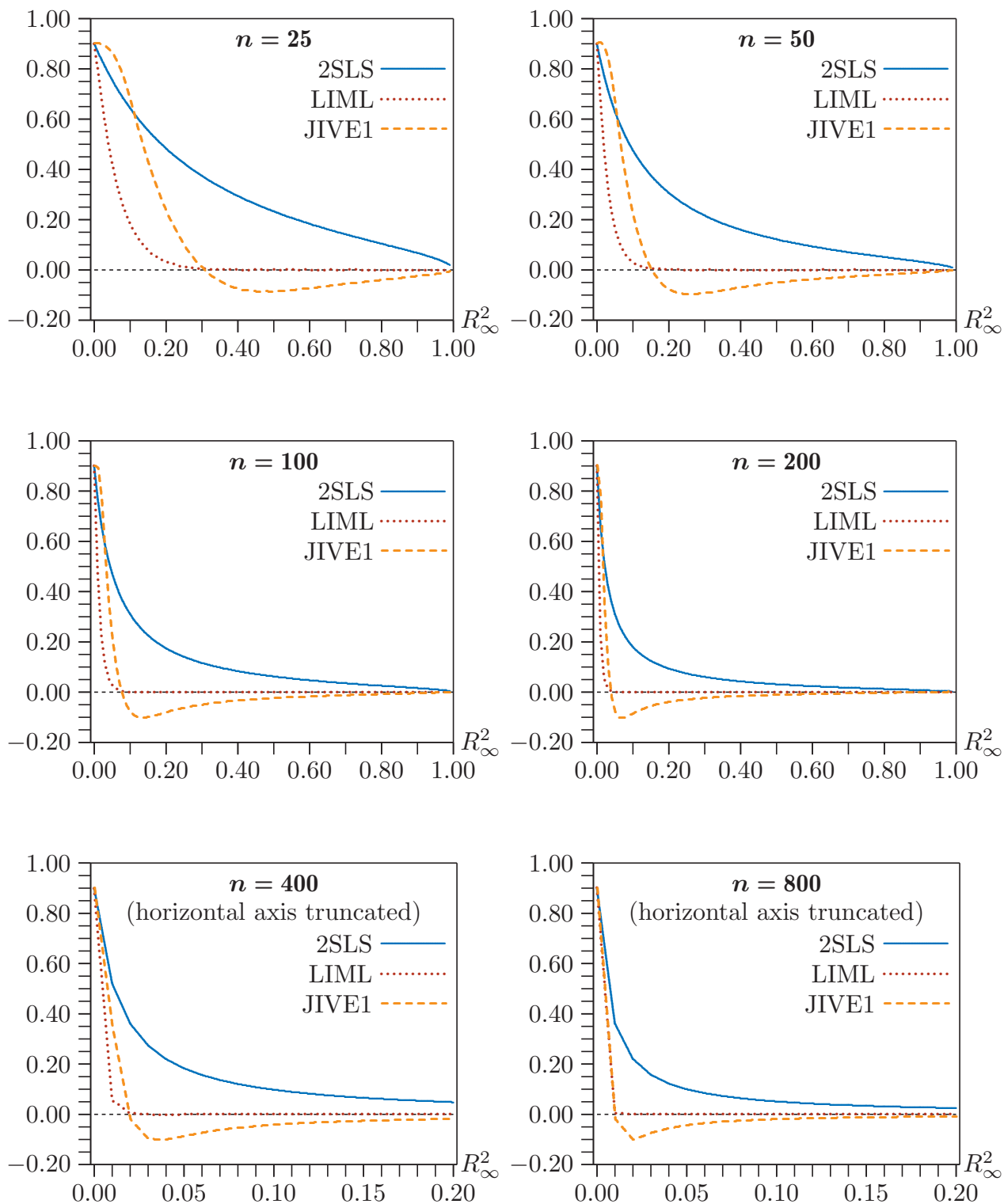


Figure 2. Median bias of three estimators, $r = 5$, $\rho = 0.9$

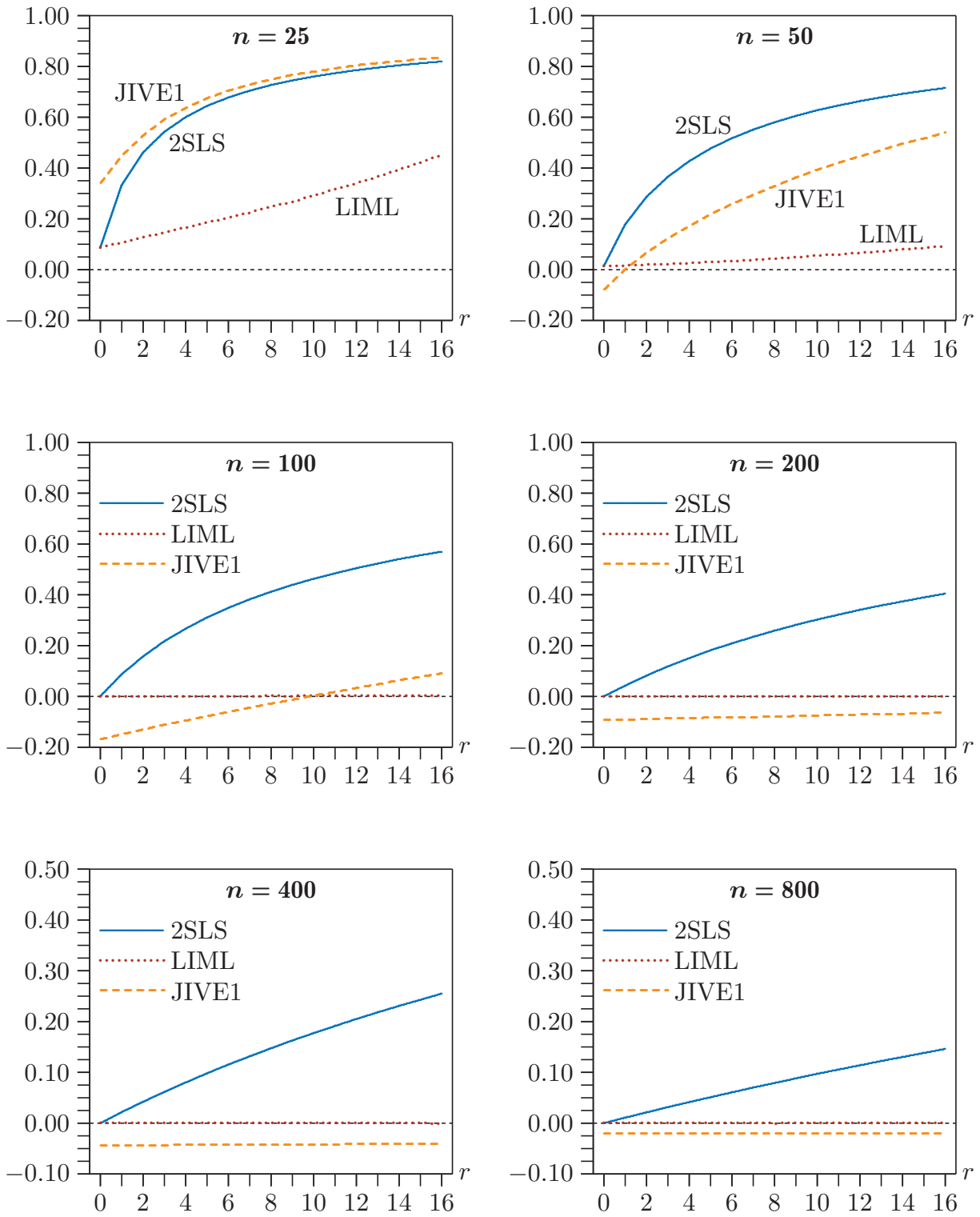


Figure 3. Median bias of three estimators, $R_{\infty}^2 = 0.1$, $\rho = 0.9$

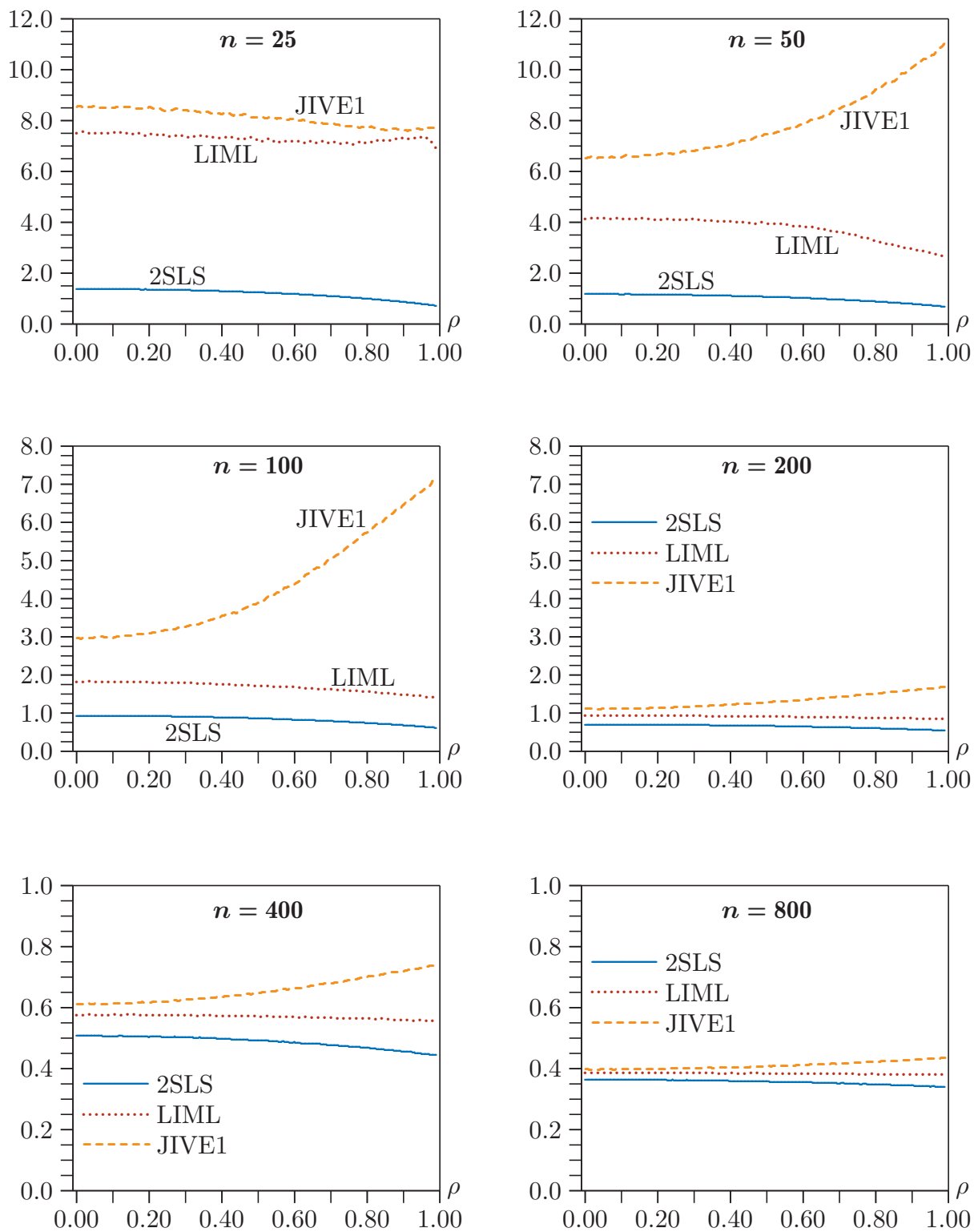


Figure 4. Nine decile range of three estimators, $r = 5$, $R_{\infty}^2 = 0.1$

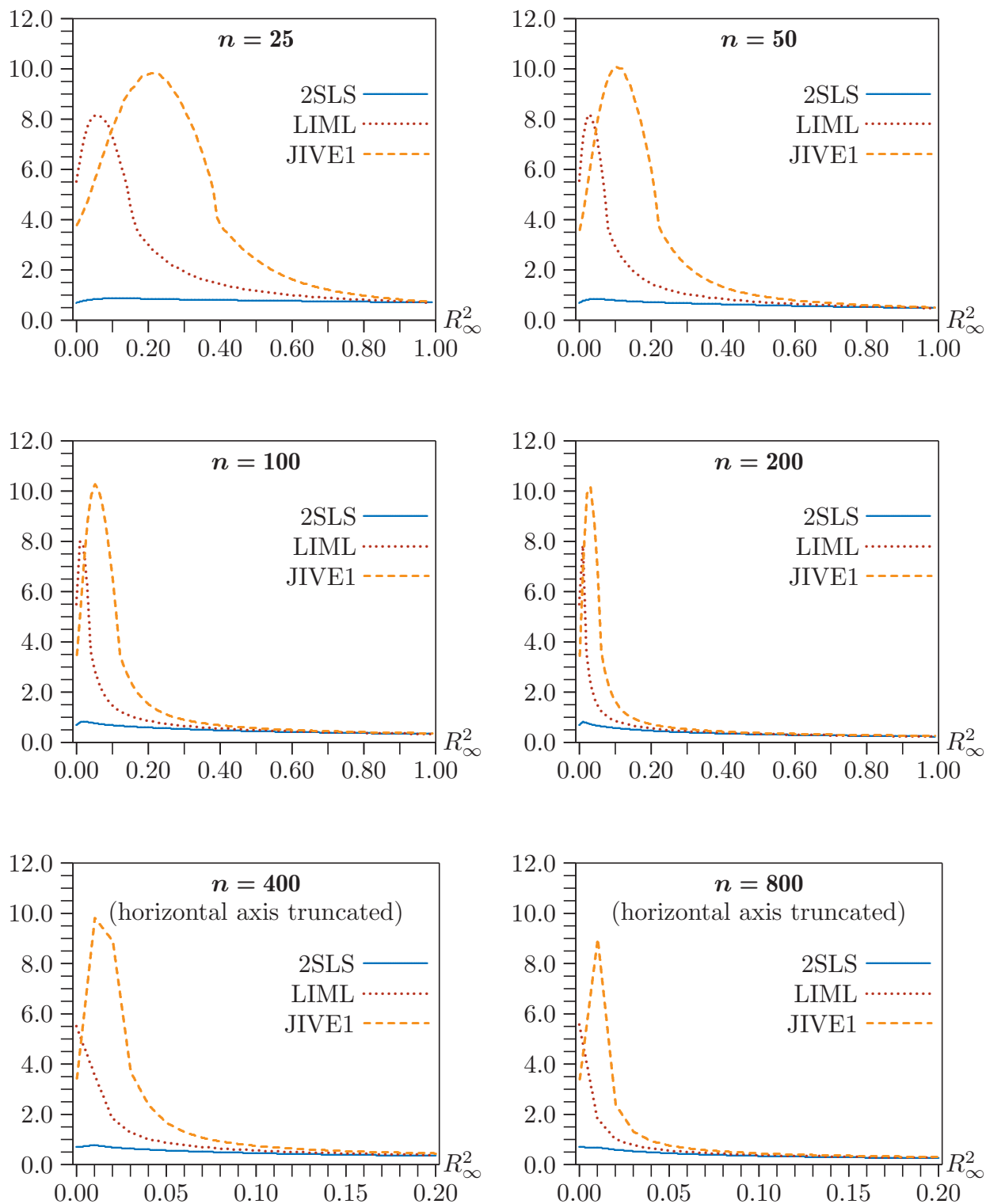


Figure 5. Nine decile range of three estimators, $r = 5$, $\rho = 0.9$

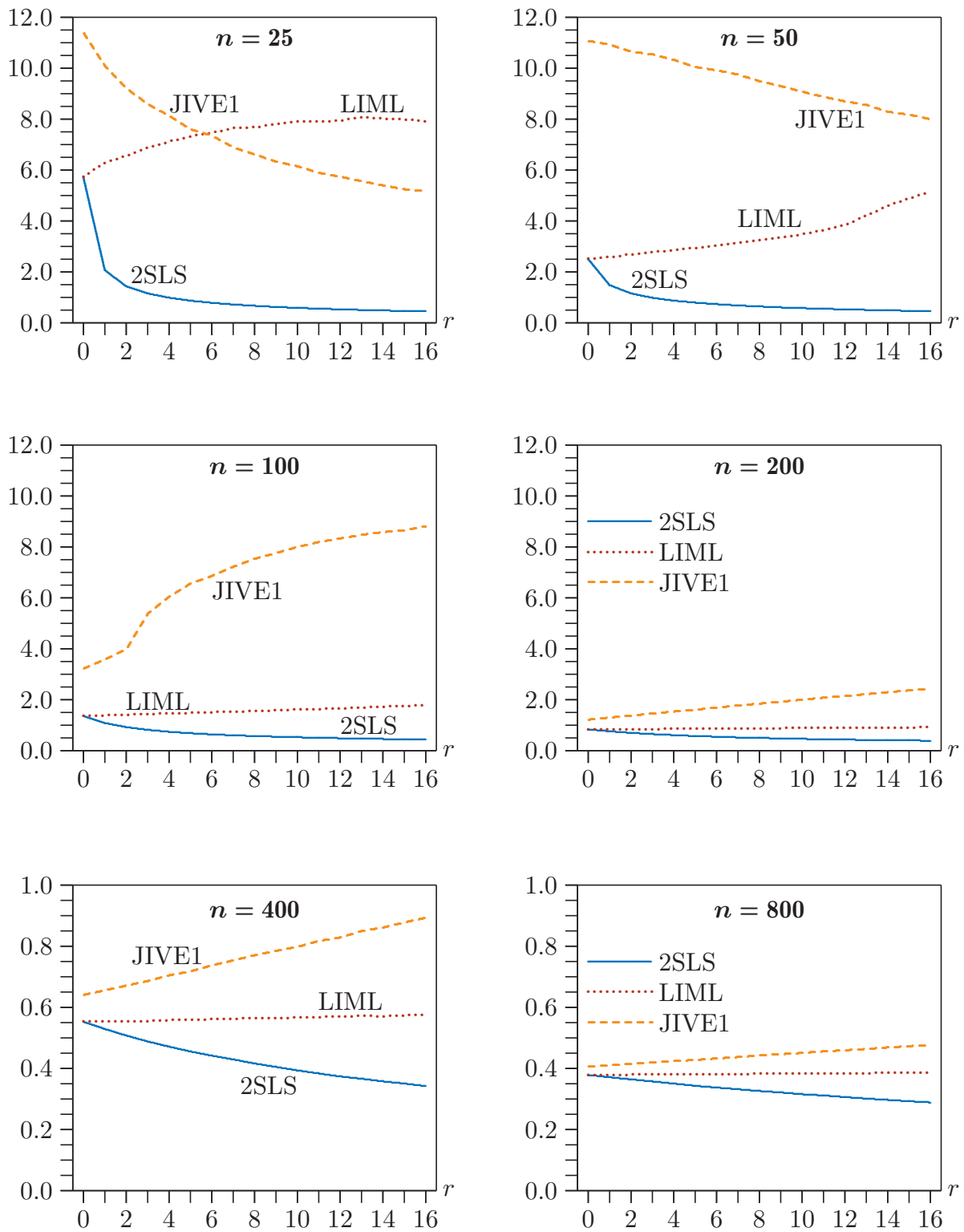


Figure 6. Nine decile range of three estimators, $R_{\infty}^2 = 0.1$, $r = 0.9$

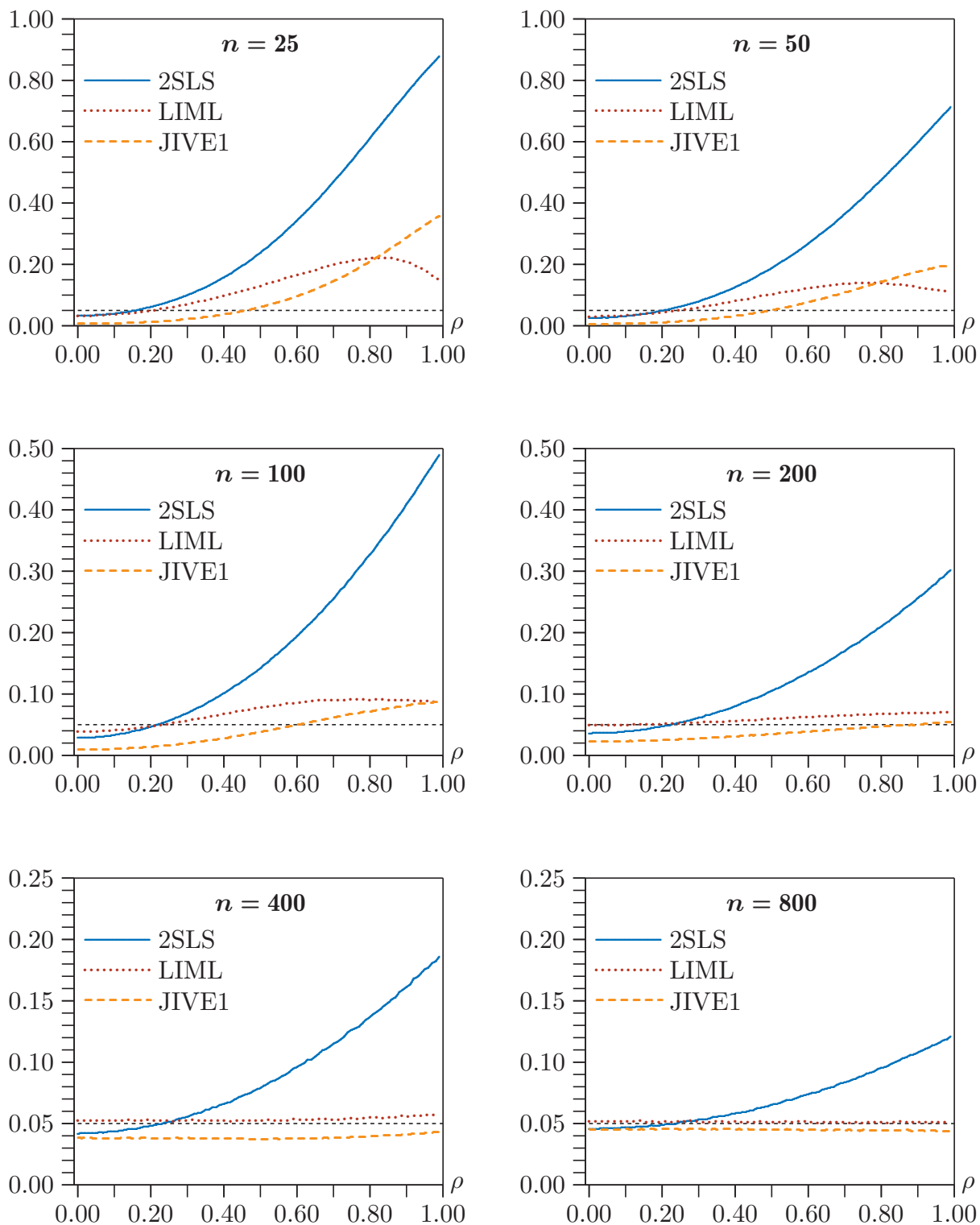


Figure 7. Rejection frequencies for asymptotic t tests at .05 level, $r = 5$, $R_{\infty}^2 = 0.1$

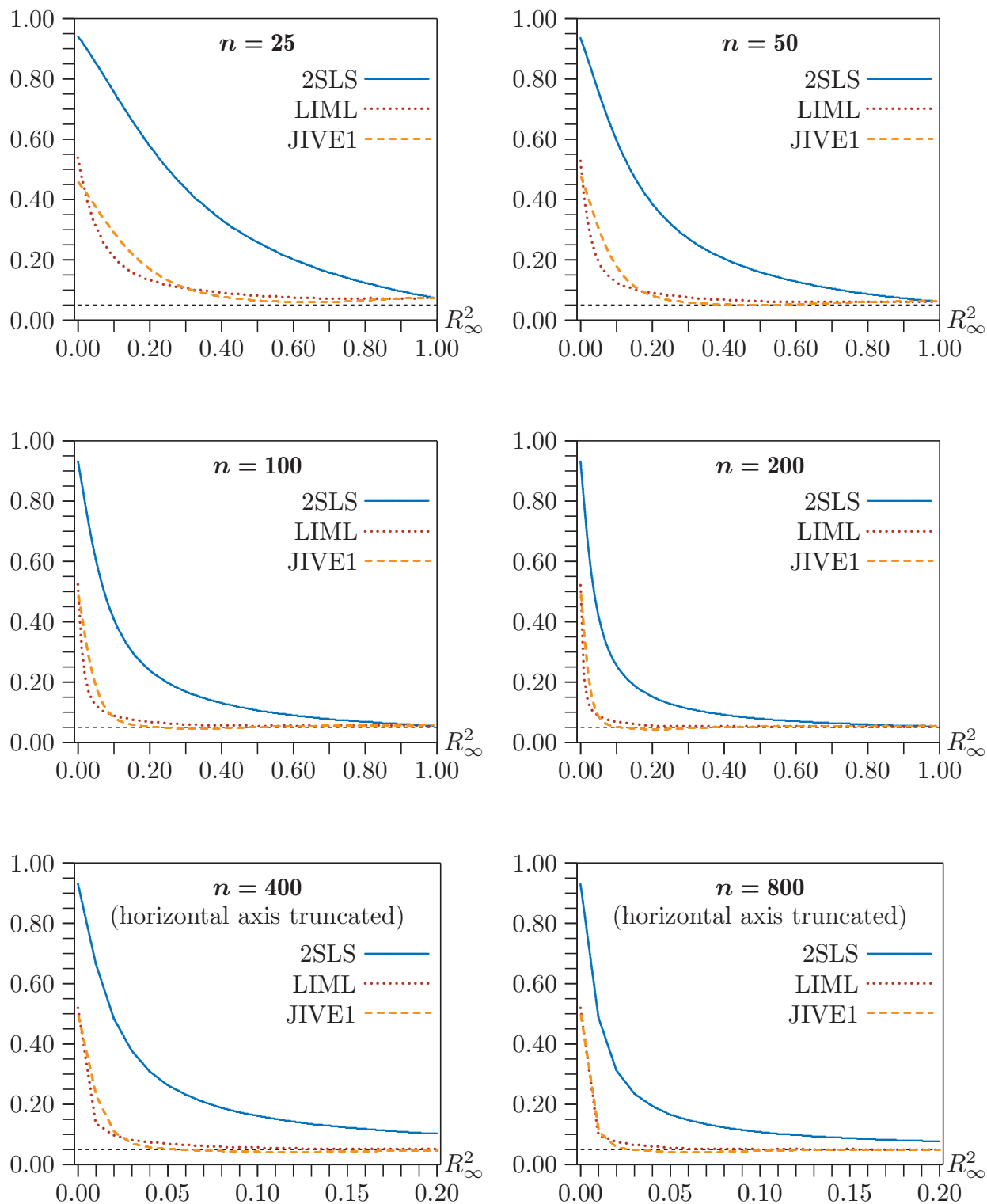


Figure 8. Rejection frequencies for asymptotic t tests at .05 level, $r = 5$, $\rho = 0.9$

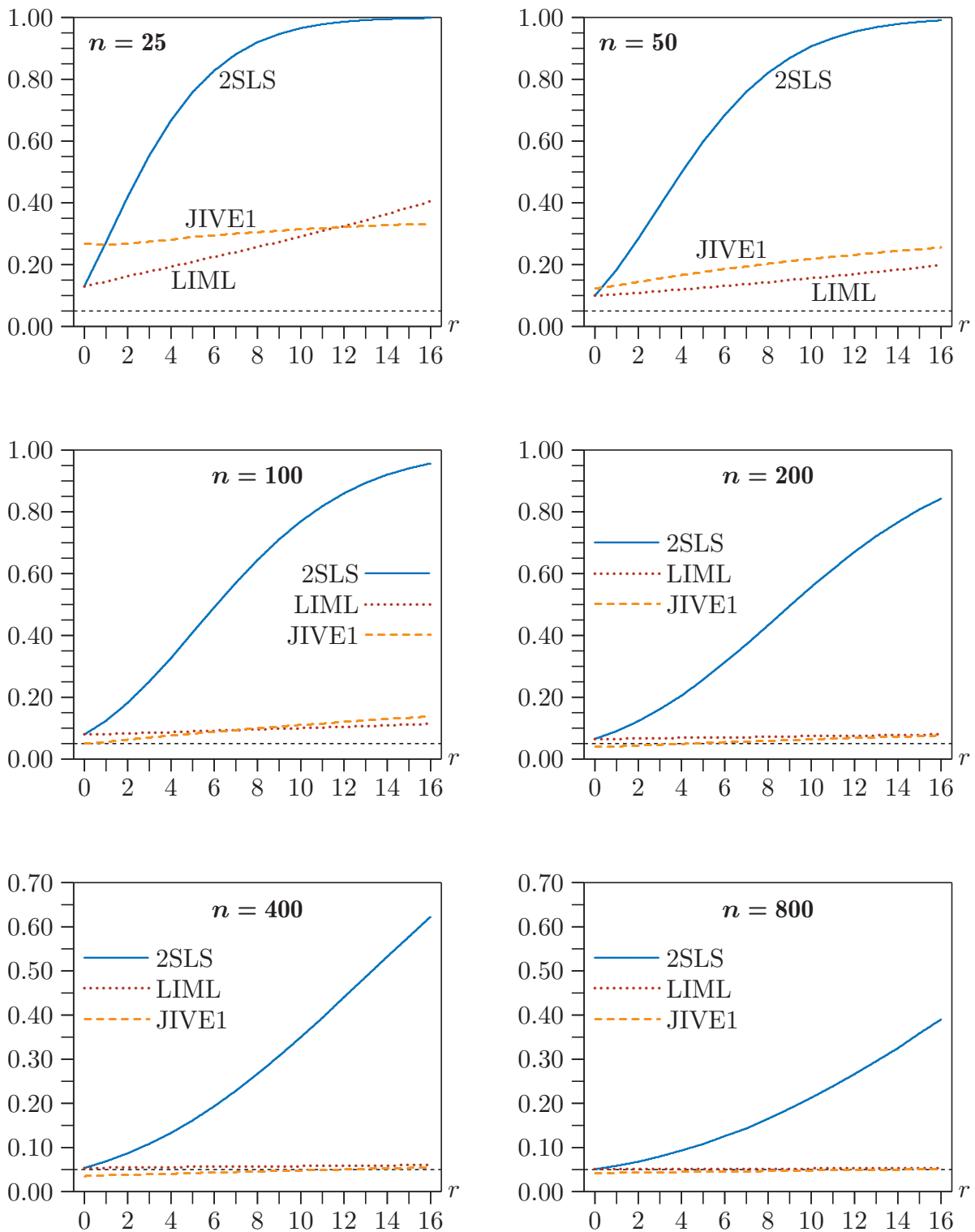


Figure 9. Rejection frequencies for asymptotic t tests at .05 level, $R_{\infty}^2 = 0.1$, $\rho = 0.9$

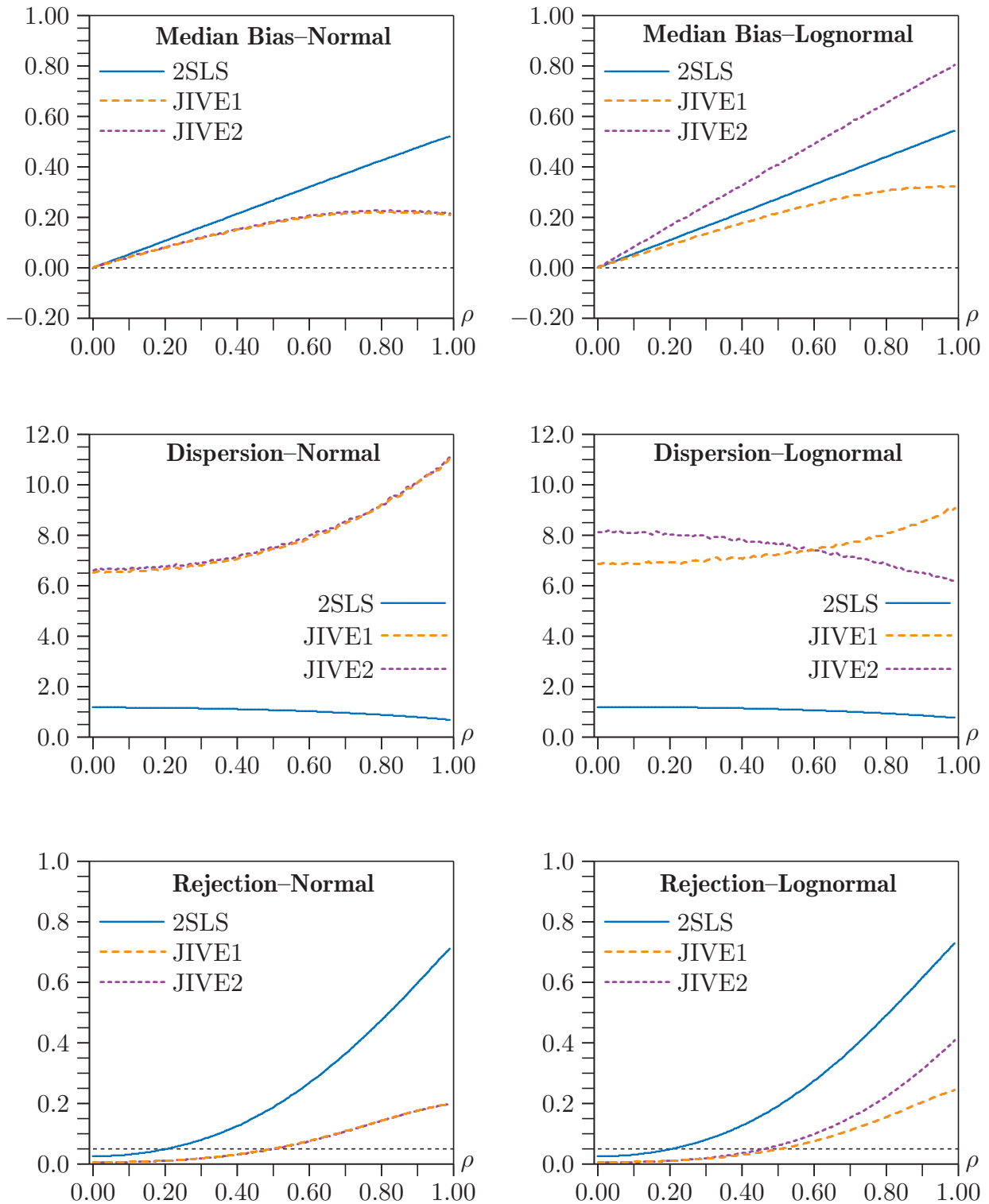


Figure 10. Effects of the Distribution of the Instruments, $n = 50$, $r = 5$, $R_{\infty}^2 = 0.1$

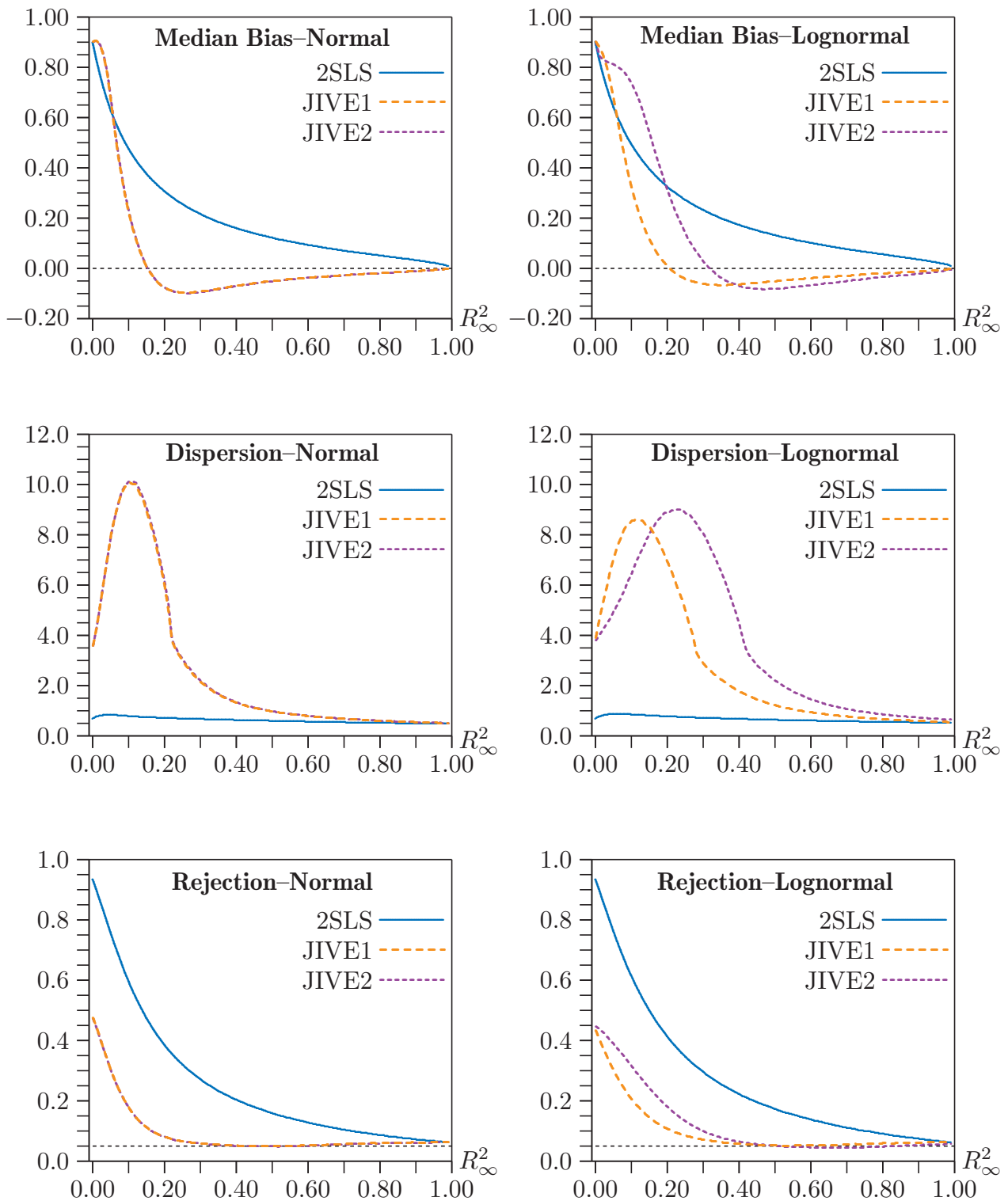


Figure 11. Effects of the Distribution of the Instruments, $n = 50$, $r = 5$, $\rho = 0.9$

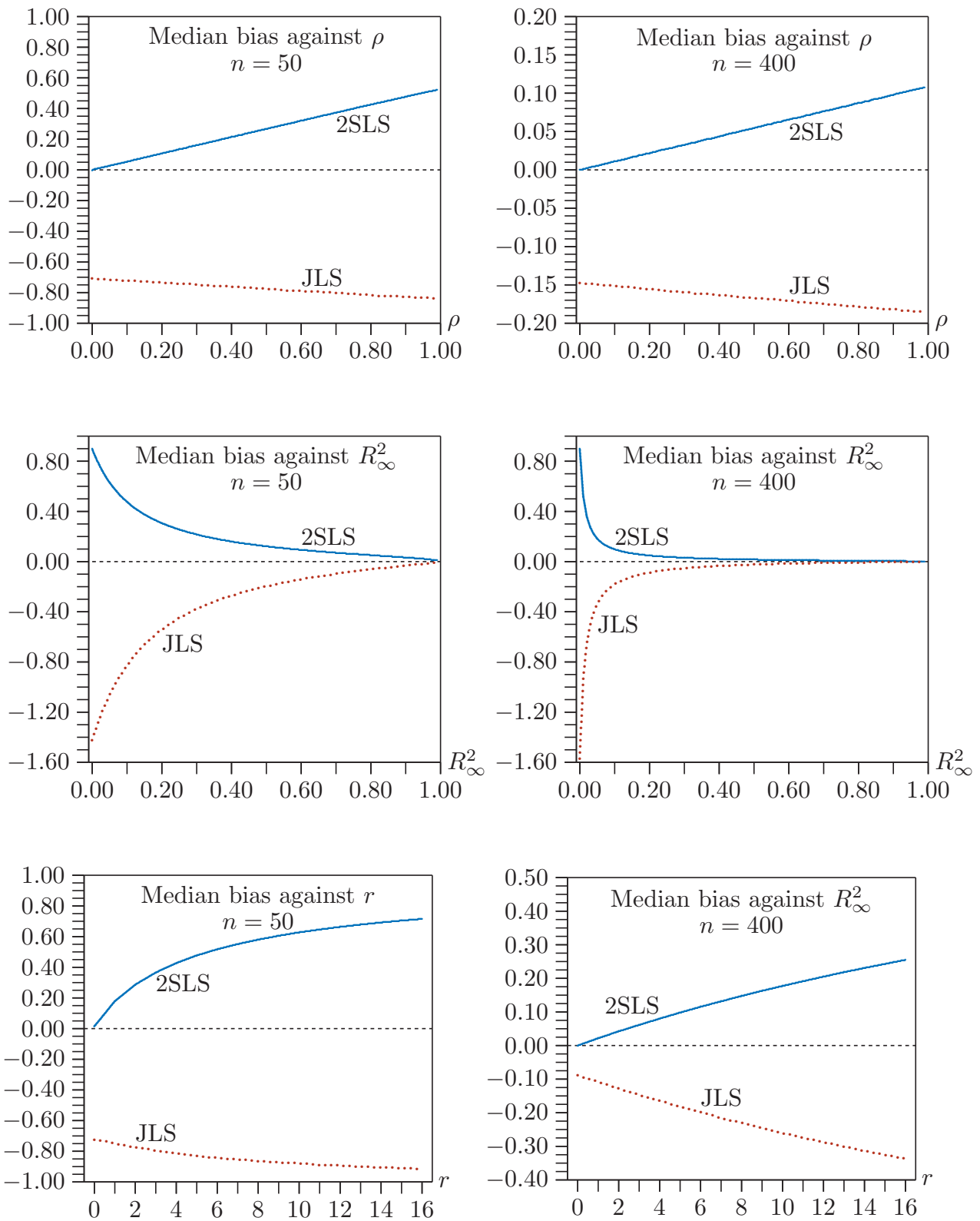


Figure 12. Median bias of 2SLS and JLS

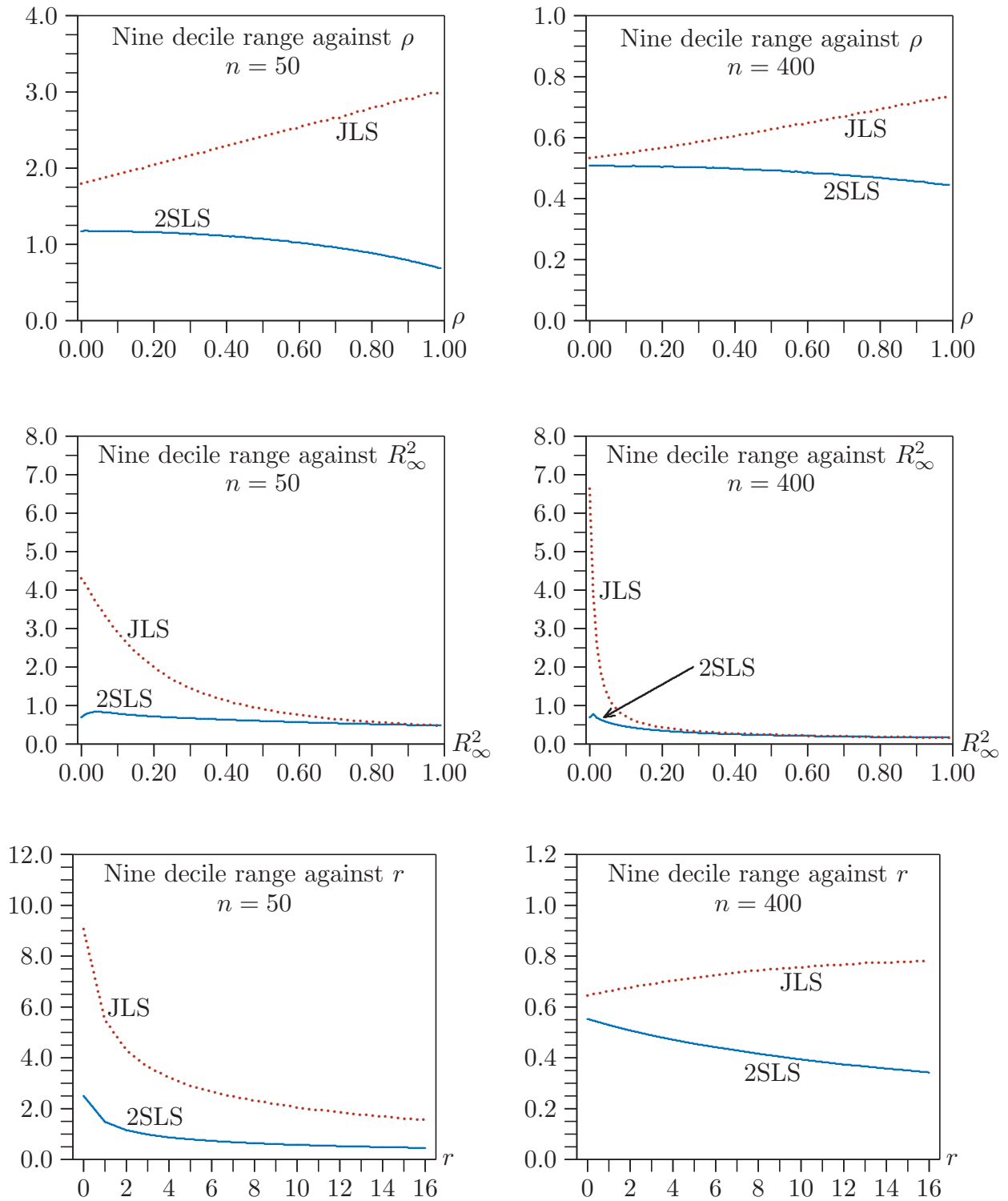


Figure 13. Nine decile range of 2SLS and JLS

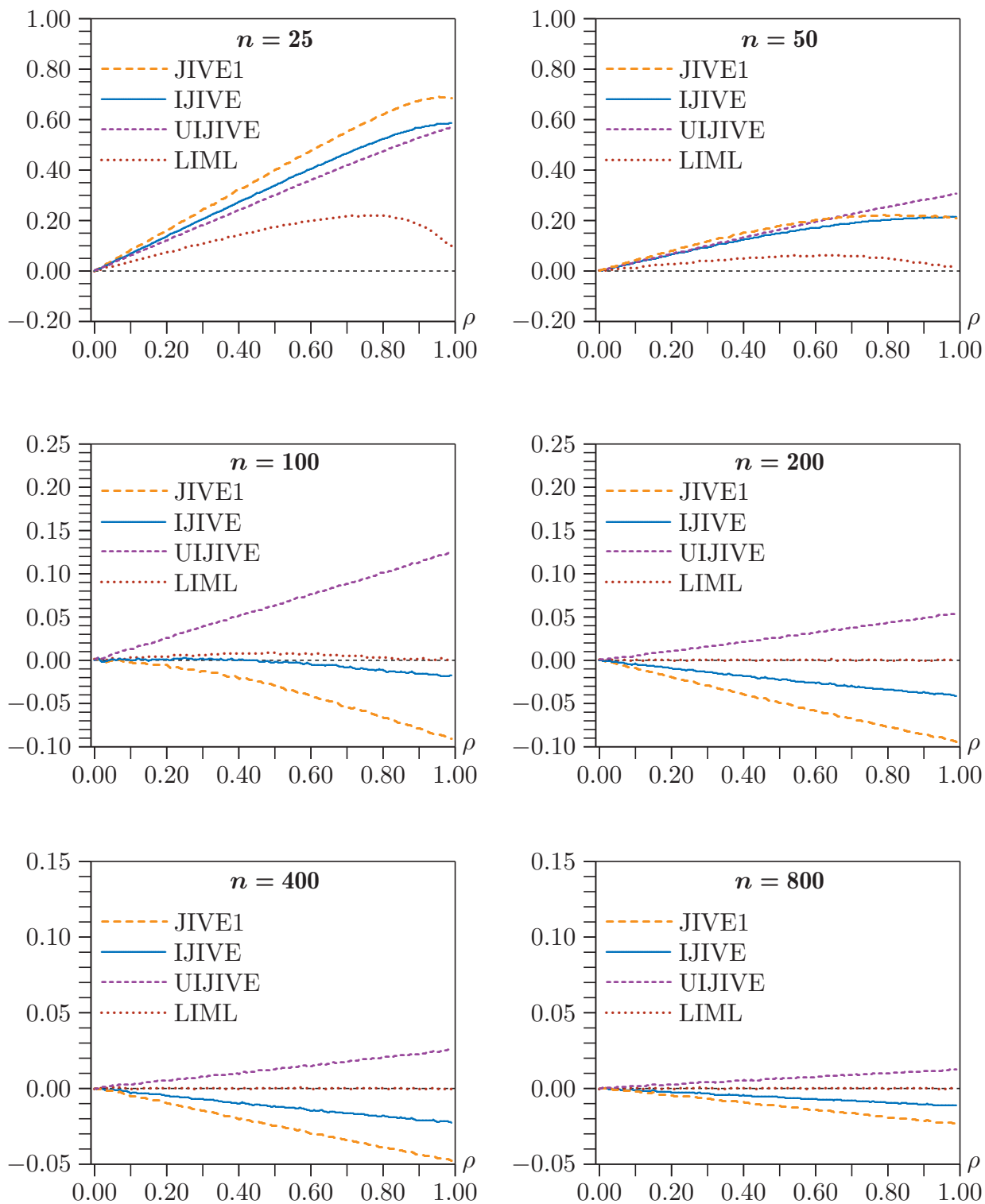


Figure 1a. Median bias of four estimators, $r = 5$, $R_\infty^2 = 0.1$

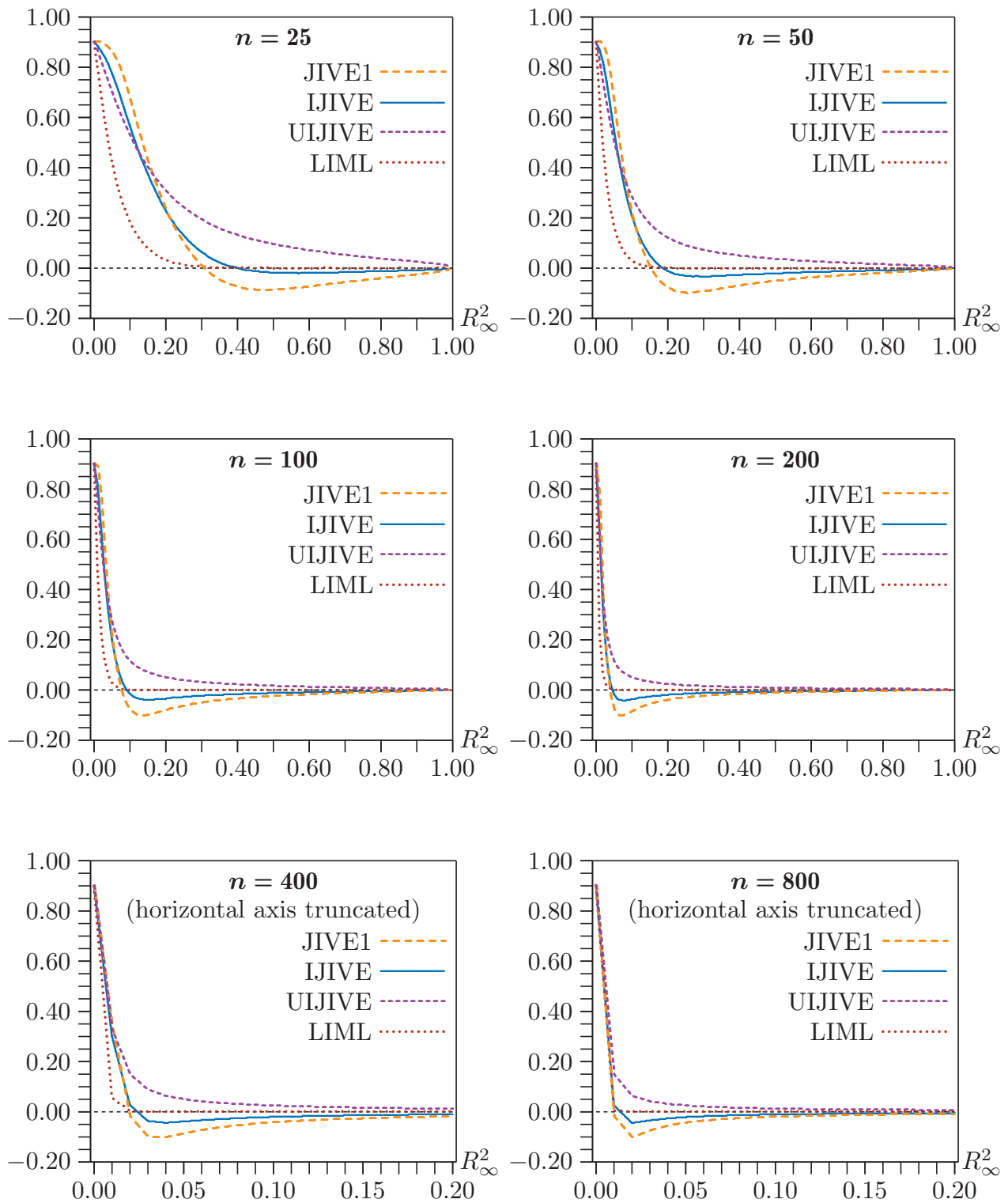


Figure 2a. Median bias of four estimators, $r = 5$, $\rho = 0.9$

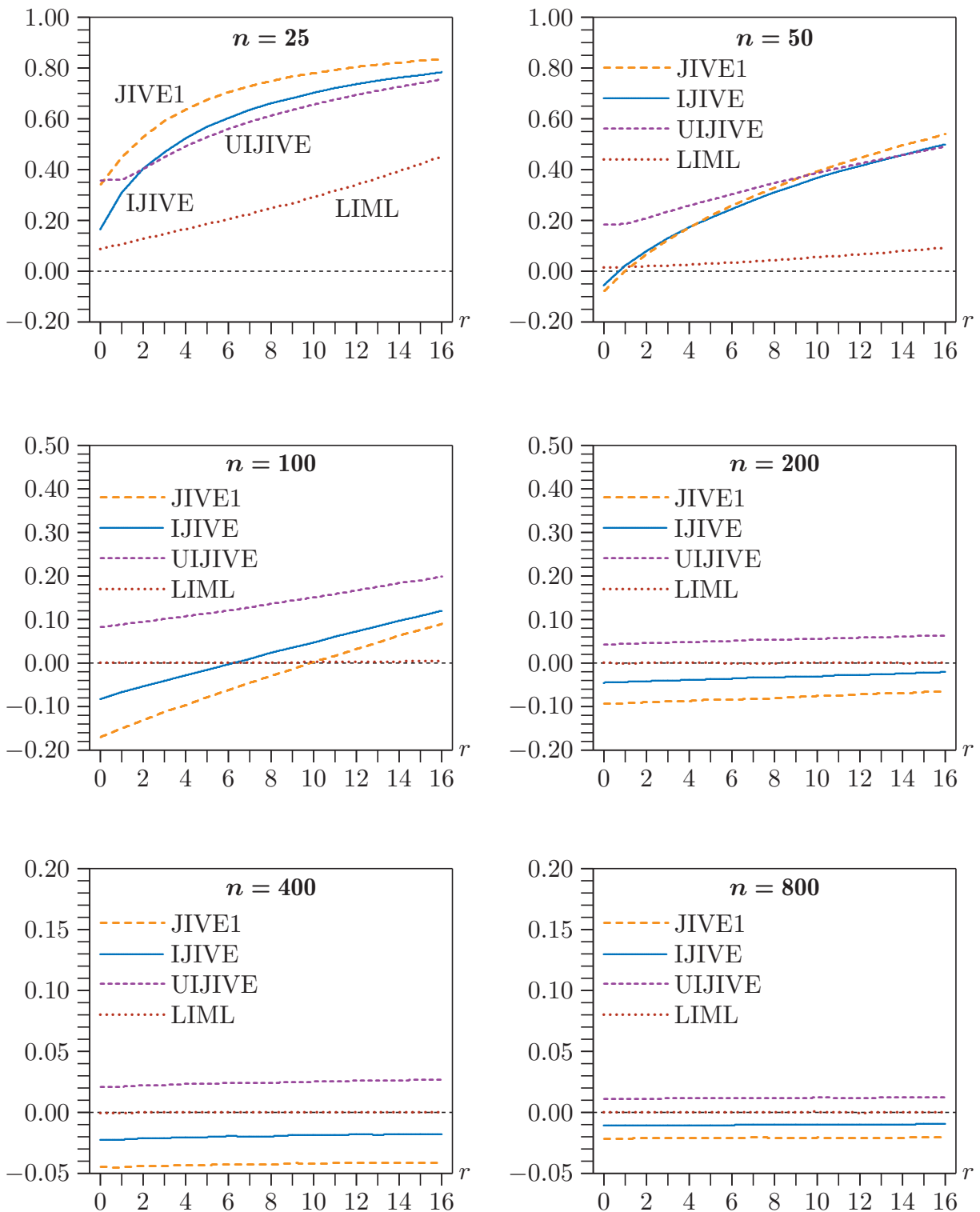


Figure 3a. Median bias of four estimators, $R_{\infty}^2 = 0.1$, $\rho = 0.9$

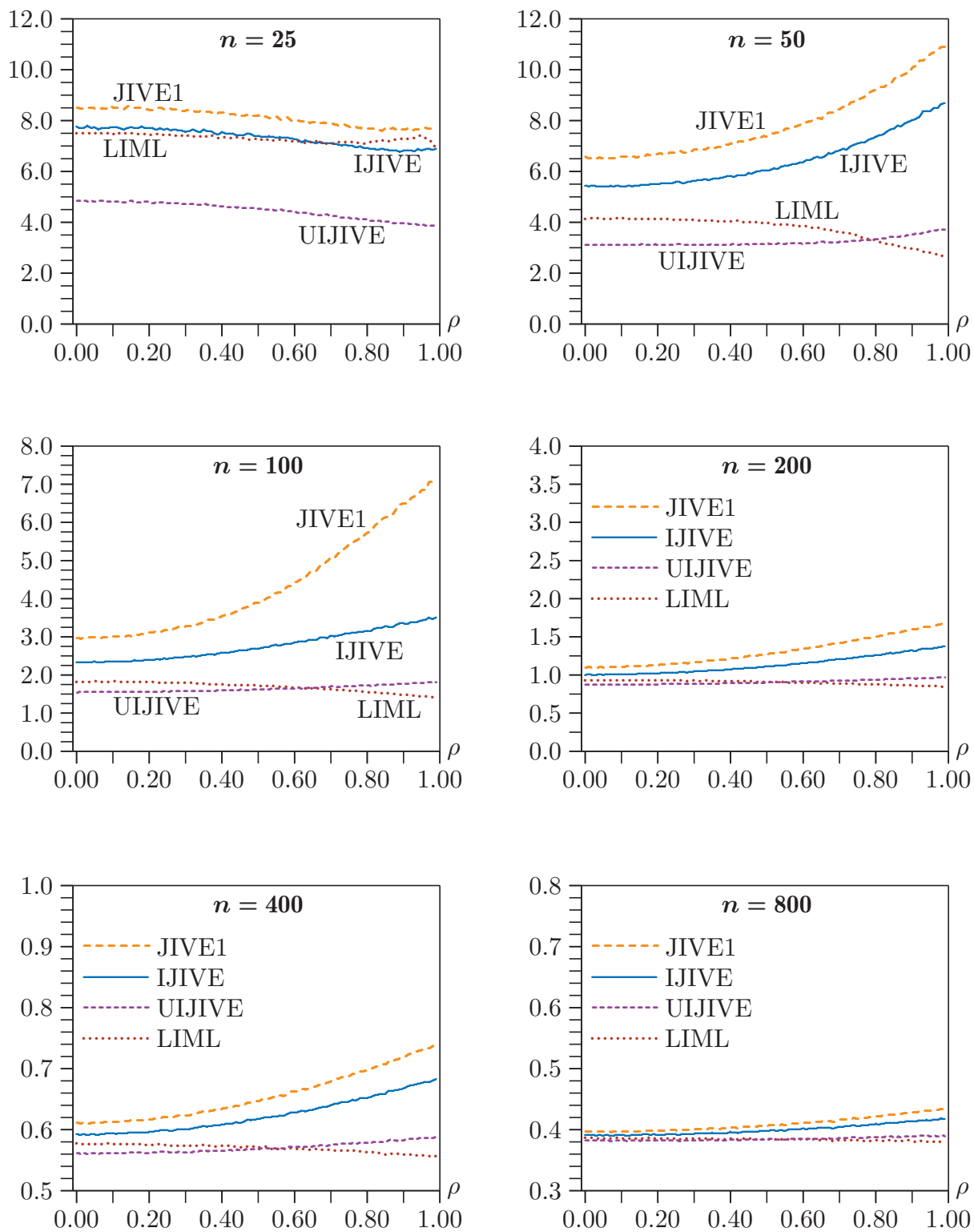


Figure 4a. Nine decile range of four estimators, $r = 5$, $R_{\infty}^2 = 0.1$

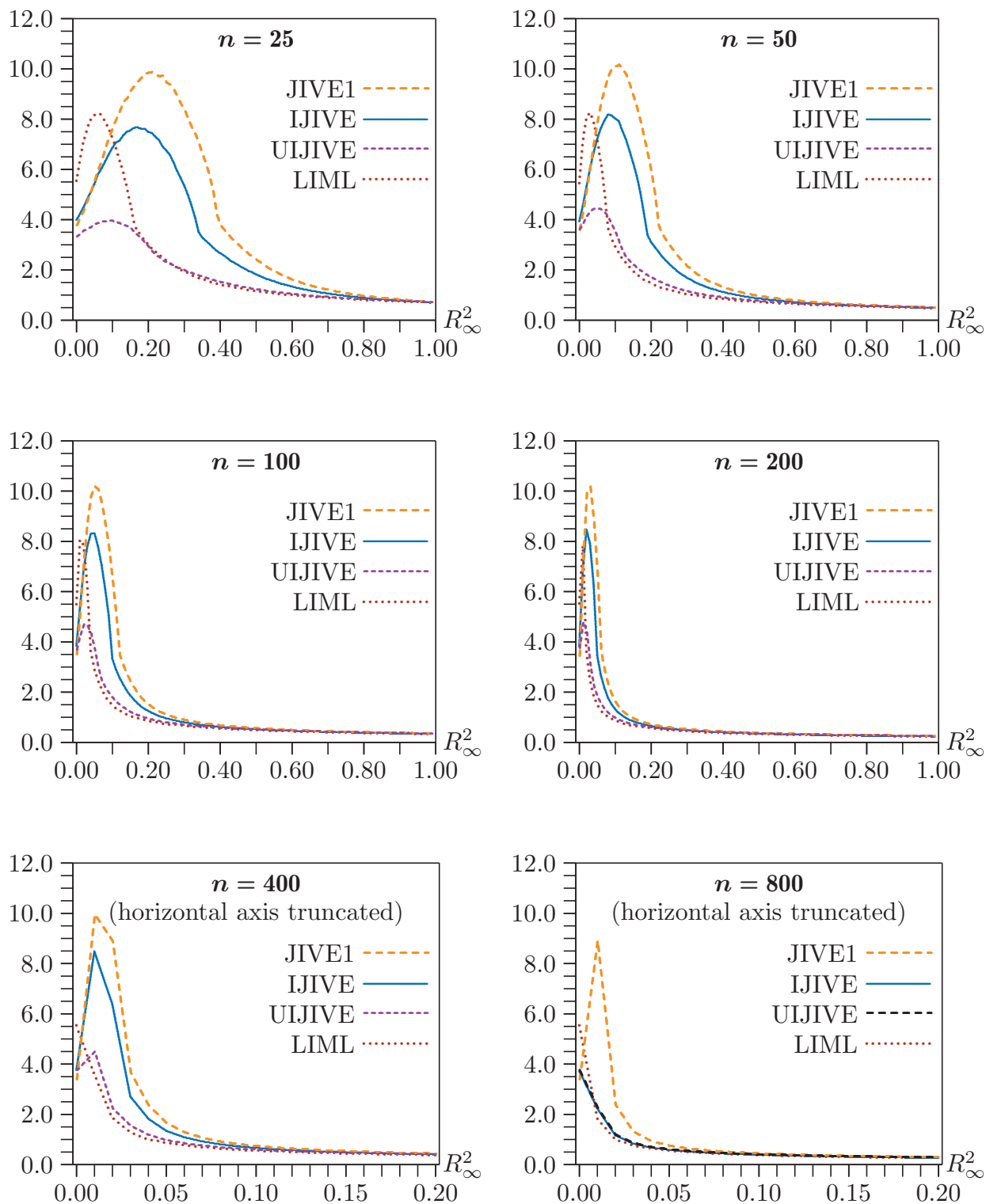


Figure 5a. Nine decile range of four estimators, $r = 5$, $\rho = 0.9$

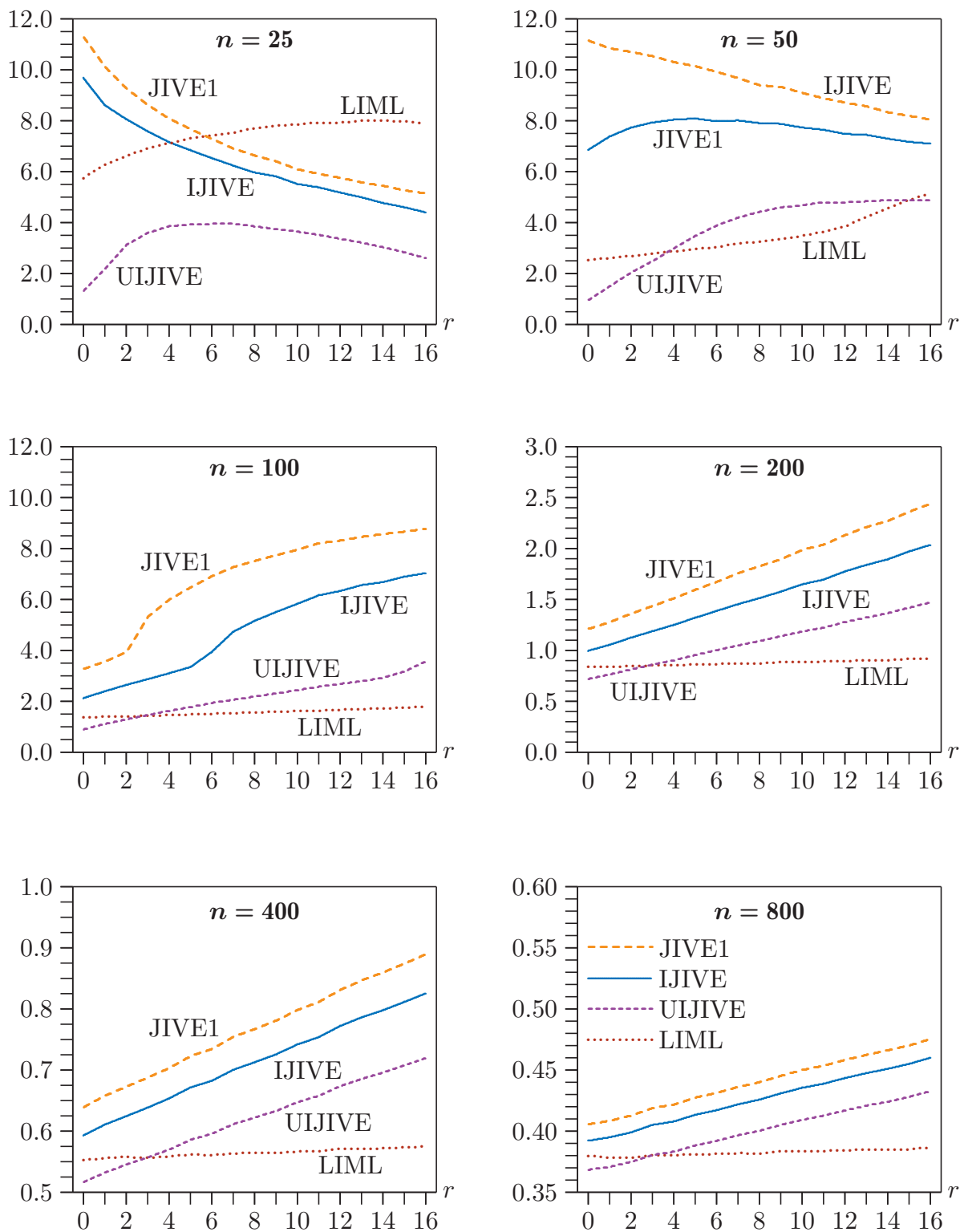


Figure 6a. Nine decile range of four estimators, $R_{\infty}^2 = 0.1$, $r = 0.9$